

Erratum

Erratum to “Endothelin-1 is increased overlying atherosclerotic
plaques in human arteries”
[Atherosclerosis 124 (1996) 25]¹

Gregory T. Jones^{a,b,*}, André M. van Rij^a, Clive Solomon^a, Ian A. Thomson^a,
Stephen G.K. Packer^a

^a*Department of Surgery, Otago Medical School, P.O. Box 913, Dunedin New Zealand*

^b*Department of Anatomy and Structural Biology, Otago Medical School, Dunedin New Zealand*

Received 2 August 1996

The Publisher regrets that reproduction of Fig. 3 in this article was of poor quality. The figure is reproduced correctly overleaf.

* Corresponding author, e-mail: greg.jones@stonebow.otago.ac.nz.

¹ SSDI of original article: 0021-9150(95)05773-0

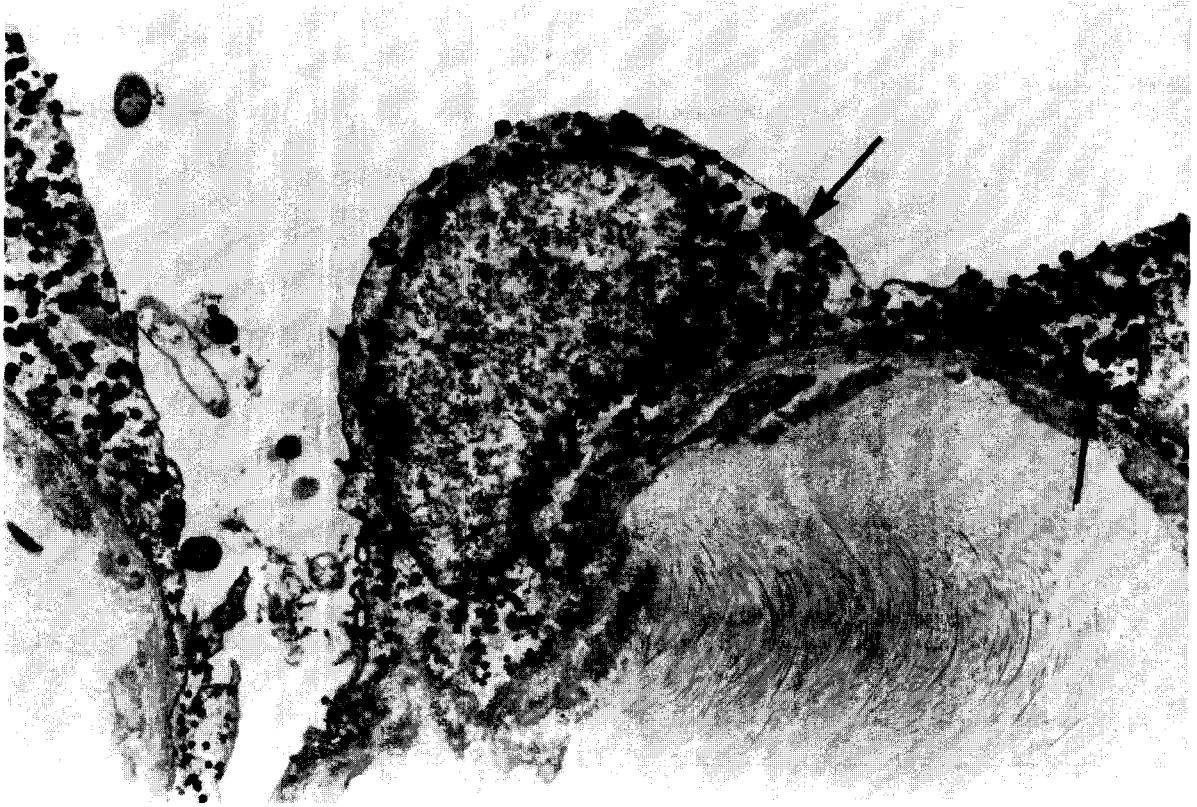


Fig. 3. Transmission electron micrograph of endothelium from a long saphenous vein specimen showing intracellular silver enhanced immunogold anti-ET-1 labelling (arrows). Note the absence of staining within the cell nucleus. The anti-ET-1 label does not appear to be specifically associated with either perinuclear organelles or vesicular structures but is dispersed throughout the cytoplasmic matrix. Lead citrate and uranyl acetate. Magnification $\times 7000$.